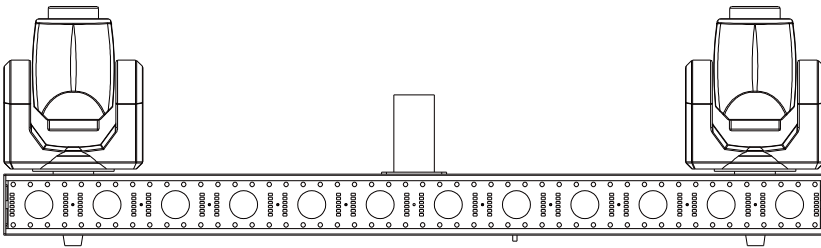




# Versa Flex Bar



Version 1.0

## USER MANUAL

- Be sure to read the USER MANUAL carefully before using this product.
- Be sure to keep the USER MANUAL properly for future needs.
- Use this product correctly when you can fully understand the User Manual



## 1.Safety instructions

Thank you for choosing our VERSA FLEX BAR.FOR YOUROWN SAFETY,PLEASE READ THIS USER MANUAL CAREFULLY BEFORE YOUR INITIAL START -UP!

**CAUTION!**  
High voltages can cause electric shock! Handle with care!

This device has left our premises in absolutely perfect condition.In order to maintain this condition and ensure safe operation, it is absolutely necessary for the user to follow the safetyinstructions and warning notes written in thismanual.

**CAUTION!**  
Keep this device away from rain and moisture!  
Unplug from power before opening the housing!

Important:

The manufacturer will not accept liability for any resulting damage caused by the non-observance of this manual or any unauthorized modifications to the device.

Please consider that damages caused by manual modifications to the device are not subject to warranty.

During the operation the housing becomes hot. Allow the fixture to cool approximately 20 minutes prior to manipulating it.

Make sure that the available voltage is not higher than stated on the rear panel.

**WARNING!** This unit does not contain an ON/OFF switch. Always disconnect power input cable to completely remove power from unit when not in use or before cleaning or servicing the fixture.

Make sure that the power-cord is never crimped or damaged by sharp edges. Check the device and the power -cord from time to time.

Always disconnect from power when the device is not in use or before cleaning it . Only handle the power-cord by the plug. Never pull out the plug by tugging the power cord.

This device falls under protection class I. Therefore, it is essential to connect the yellow/ green conductor to ground electric connection.

Repairs and servicing must be carried out by a qualified employee. Do not connect this device to a dimmer pack.

Power Switch Fuse POWER IN POWER OUT DMX OUT DMX IN

Do not switch the fixture on and off in short intervals as this would reduce the lamp's life.

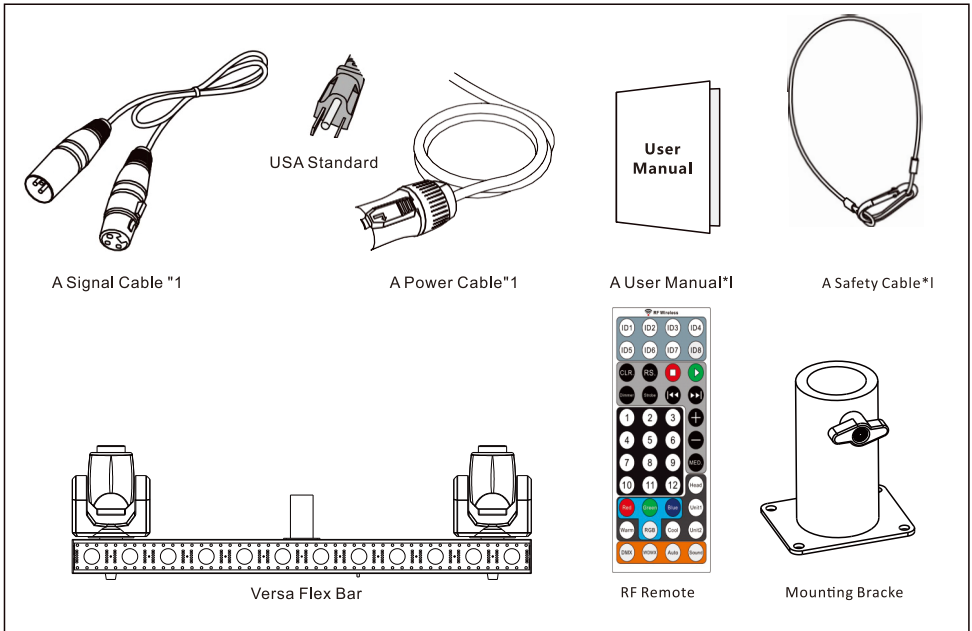
During the initial start-up some smoke or smell may arise. This is a normal process and does not necessarily mean that the device is defective.

Do not touch the device's housing bare hands during its operation (housing becomes hot)!

For replacements, use lamps and fuses of same type and rating only.

**CAUTION! EYE DAMAGE!**  
Avoid looking directly into the light source! It may cause eye damage or seizures for people with epilepsy!

## 2.UNPACKING



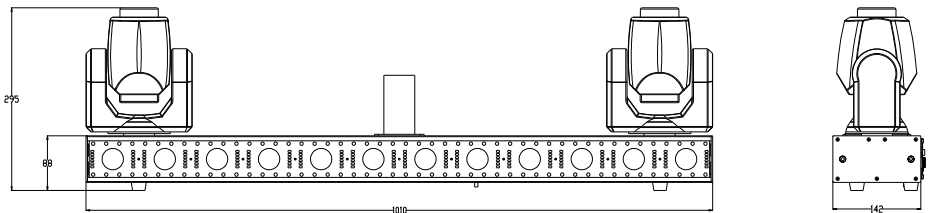
The VERSA FLEX BAR is made of a new type of high temperature strength of engineering plastics and cast aluminum casing with nice outlook. The fixture is designed and manufactured strictly following CE standards, complying with international standard DMXS12 protocol. It is available to be independently controlled and linkable with each other for operation. And it is applicable for large-scale live performances, theater, studio, nightclubs and discos.

This manual covers the important information on installation and applications. Meanwhile, please keep this manual well for future needs.

### 3.TECHNICAL INFORMATION

#### Specifications

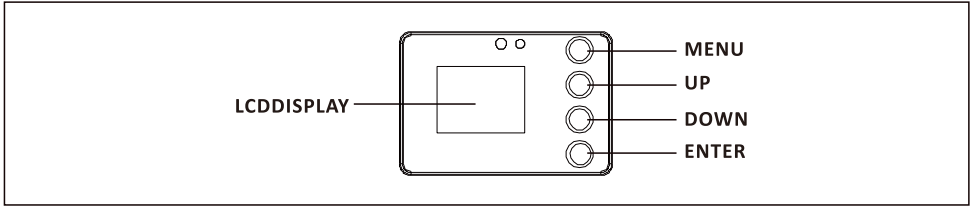
- Led quantity:12\*0.5w warm white led,96\*0.2RGB outer SMDs,156\*0.5 ultra-white inner SMDs ;7\*10w RGBW,60\*0.2 RGB;19\*10w RGB W;220\*0.2w 5050 RGB SMD led;324\*0.5w cool warm white SMD led; 2\*30w white led
- Control signal: DMX512, master - slave and sound activated or auto
- Control channel: (35+AA+BB) CH/(25+AA+BB) CH/(83+AA+BB) CH;AA=Unit1 par can; CH;BB=Unit2 Par can
- Dimensions: 1010\*149\*589mm
- Net weight:18.7kgs
- Gross weight:21kgs
- 26-degree beam angle
- Built - in running programs
- 1 State gobo wheel with 7 gobos plus open
- 1 Color wheel with 7 colors plus open
- There is Unit 1 and Unit 2 DMX mode option; Control channel is changeable, based on different par can.
- Each pixel is controllable individually
- 0-100%linear LED dimmer
- 1.8" TFT LCD display (160\*128pix)
- 1- 2ST/sec high-speed LED shutter/strobe effect with variable speed
- - 35~45-c max ambient temperature
- Display reversible for upside down application
- IP20 protection rating
- Preset variable/random strobe and dimming pulse effect
- Power-con IN/OUT



## 4. OPERATION INSTRUCTIONS

- VERSA FLEX BAR for wash effect for on-site decoration purpose.
- Do not immediately operate the fixture if it has been through severe temperature changes during storage or transportation, this may damage the unit. Please allow the fixture to return to normal temperature.
- The fixture should be stored properly when in transportation avoid violent shaking or movement.
- Do not expose the fixture to elements that include high heat, moisture, or an environment with too much dust when in operation.
- Do not place any power cables exposed on the ground as it may cause electronic shock.
- Make sure the fixture is securely installed in a safe location when installing.
- Use safety chain or safety cable when installing and ensure bolts or screws are securely fastened.
- Make sure the lens is in good condition. It is recommended to replace the fixture if there is any damages or severe scratches.
- Make sure the fixture is operated by qualified personnel who has read this user manual in its entirety.
- Do not attempt to repair the fixture without consulting with JMAZ Lighting or one of its authorized repair facilities.
- JMAZ Lighting has the right to void any warranty or service to the fixture if there are any malfunctions caused by disregard of this user manual.

## 5. MENU OPERATIONS



MENU		Description	
Dmx Addr	A001~AXXX	DMX Address Setting	
Auto Play	Auto Program	Internal Program1~12	
	Music Control	Internal Program1~12	
	Speed Set	Speed 1~10	
Add On	Unit 1	Tron7 XXX-XXX_CH Tron7(XXX_CH Channel Range)	
		Quad19 XXX-XXX_CH Quad19(XXX_CH Channel Range)	
		Tri220 XXX-XXX_CH Tri220(XXX_CH Channel Range)	
		Duo324 XXX-XXX_CH Duo324 (XXX_CH Channel Range)	
	Unit 2	Tron7 XXX-XXX_CH Tron7(XXX_CH Channel Range)	
		Quad19 XXX-XXX_CH Quad19(XXX_CH Channel Range)	
DMX Mode	Simple Mode	XX_CH = (35+AA+BB)CH Simple Occupies Less Channels	
	Same Mode	XX_CH = (25+AA+BB)CH Same Mode Occupies very Few Channels	
	Full Mode	XX_CH = (83+AA+BB)CH Full Mode Occupies more Channels	
	Macro Mode	45_CH Macro Mode Occupies 45 Channels	
	Min Mode	23_CH Min Mode Occupies 23 Channels	
	AA: Unit 1 CHANNL BB:Unit 2 CHANNL	Find in relevant	Par Can Channel Table
Settings	RF Remote	On/Off RF Remote	
	RF ID	ID 1~8 RF ID Set	
	LED Dir.	On/Off LED Direction	
	Mic SET	0~99% Sensitivity of mic	
	Master Set	Master/Alone Master/Alone	
	Signal Set	Wire	Cable DMX512
		Wireless	Only Wireless In
		WMAZ&Out	WMAZ& Cable DMX Out
		Auto I&O	Automatic Identification: 1、 Cable in &Transmit wireless 2、 No Cable and Automaticlly access to Wireless
	Calibration	Code ( Password: 088 )	Calibration Code
		PAN,TILT,Color...	Calibration of the channel
	Temperature	XXX℃/℉	Current Temperature
	Pan1 Rev.	On/Off	Reverse Pan1
Pan2 Rev.	On/Off	Reverse Pan2	
Tilt1 Rev.	On/Off	Reverse Tilt1	

	Tilt2 Rev.	On/Off	Reverse Tilt2
	PAN Degree	540° 360°	Select Pan Degree, The default is 540
	TILT Degree	270° 180°	Select Tilt Degree, The default is 270
		90°	
	Manual Control	PAN=XXX.....	Manual Control
Reset	To Default	On/Off	Reset Default
	ALL Reset	On/Off	ALL Reset
	Scan Reset	On/Off	Scan Reset
	Color Reset	On/Off	Color Reset
	Gobo Reset	On/Off	Gobo Reset
Version	V1.0—VXX		Software Version: V1.0—VXX

**Precautions:**

1: Unit 1 and Unit 2 cannot be set to the same type of parcan. Running 2 of the same pairs of parcans on Unit 1 and Unit 2, can overclock the power supply and damage the Versa Flex Bar.

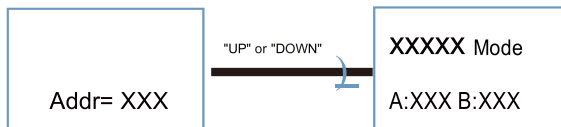
2: Always set the correct Unit type for Unit 1 and Unit 2. If the incorrect unit is selected, the incorrect DMX addressed and controls for the parcan pairs will not function correctly, potentially damaging the parcans.

3: The VERSA FLEX BAR has a total of 200+ channels when in FULL Mode and has 2 pairs of parcans connected. Please make sure you are using a DMX Controller that can use a large amount of channels to fully control all aspects of the VERSA FLEX BAR. Please make sure to set the VERSA FLEX BAR to the correct address in order to fully control it.

4: The VERSA FLEX BAR is a combination fixture. You can control the VERSA FLEX BAR and all added parcans at the same time. DMX Channel Settings are as following:  
Base VERSA FLEX BAR + Unit 1 + Unit 2

5: Make sure you set your VERSA FLEX BAR to the desired RF ID. Make sure to press the corresponding RF ID on the top of the remote to pair the device to the remote.

6: The model's name and set address are displayed by default when power on. After pressing the "UP" or "DOWN" button, the device will enter the current channel mode and the address of Unit 1 and Unit 2. (Convenient for the lighting designer to check the address of Unit 1 and Unit 2. If you do not operate for 10 seconds, jump back to the model name and chassis address)





## DMX PROTOCOL

Mode/Channel				Value	Function
Simple 35CH	Same 25CH	Full 83CH	Macro 45CH		
1	1	1	1		<b>Head 1 Pan</b>
				0..255	PAN Movement
2		2	2		<b>Head 1 Pan-fine</b>
				0..255	Fine control of Pan movement
3	2	3	3		<b>Head 1 Tilt</b>
				0..255	Tilt Movement
4		4	4		<b>Head 1 Tilt-fine</b>
				0..255	Fine control of Tilt movement
5	3	5	5		<b>Head 1 Color wheel</b>
				0..19	Open / white
				20..39	Color 1
				40..59	Color 2
				60..79	Color 3
				80..99	Color 4
				100..119	Color 5
				120..139	Color 6
				140..159	Color 7
160..255	rainbow effect from slow to fast				
6	4	6	6		<b>Head 1 Gobo wheel</b>
				0..9	Open
				10..19	gobo 1
				20..29	gobo 2
				30..39	gobo 3
				40..49	gobo 4
				50..59	gobo 5
				60..69	gobo 6
				70..79	gobo 7
				80..89	Gobo 1 shake slow to fast
				90..99	Gobo 2 shake slow to fast
				100..109	Gobo 3 shake slow to fast
				110..119	Gobo 4 shake slow to fast
				120..129	Gobo 5 shake slow to fast
				130..139	Gobo 6 shake slow to fast
				140..159	Gobo 7 shake slow to fast
160..255	Rot. gobo wheel cont. rotation slow to fast				
7	5	7	7		<b>Head 1 Shutter</b>
				0..31	Shutter closed
				32..63	shutter open
				64..95	Strobe effect slow to fast
				96..127	shutter open
				128..159	Pulse-effect in sequences slow to fast
				160..191	shutter open
				192..223	Random strobe effect slow to fast
224..255	shutter open				

8	6	8	8		<b>Head 1 Dimmer</b>
				0..255	Dimmer 0%...100%
9	1	9	9		<b>Head 2 Pan</b>
				0..255	PAN Movement
10		10	10		<b>Head 2 Pan-fine</b>
				0..255	Fine control of Pan movement
11	2	11	11		<b>Head 2 Tilt</b>
				0..255	Tilt Movement
12		12	12		<b>Head 2 Tile-fine</b>
				0..255	Fine control of Tilt movement
13	3	13	13		<b>Head 2 Color wheel</b>
				0..19	Open / white
				20..39	Color 1
				40..59	Color 2
				60..79	Color 3
				80..99	Color 4
				100..119	Color 5
				120..139	Color 6
				140..159	Color 7
160..255	rainbow effect from slow to fast				
14	4	14	14		<b>Head 2 Gobo wheel</b>
				0..9	Open
				10..19	gobo 1
				20..29	gobo 2
				30..39	gobo 3
				40..49	gobo 4
				50..59	gobo 5
				60..69	gobo 6
				70..79	gobo 7
				80..89	Gobo 1 shake slow to fast
				90..99	Gobo 2 shake slow to fast
				100..109	Gobo 3 shake slow to fast
				110..119	Gobo 4 shake slow to fast
				120..129	Gobo 5 shake slow to fast
				130..139	Gobo 6 shake slow to fast
140-159	Gobo 7 shake slow to fast				
160..255	Rot. gobo wheel cont. rotation slow to fast				
15	5	15	15		<b>Head 2 Shutter</b>
				0..31	Shutter closed
				32..63	shutter open
				64..95	Strobe effect slow to fast
				96..127	shutter open
				128..159	Pulse-effect in sequences slow to fast
				160..191	shutter open
				192..223	Random strobe effect slow to fast
224..255	shutter open				
16	6	16	16		<b>Head 2 Dimmer</b>
				0..255	Dimmer 0%...100%

17	7	17	17		<b>Speed pan/tile</b>
				0..225	max to min speed
				226..235	blackout by movement
				236..245	blackout by all wheel changing
				246..255	no function
					<b>Internal program Speed (if Special function Channl in 100*164)</b>
				0..255	slow to fast
18	8	18	18		<b>Special function</b>
				0..19	No function
				20..29	No function
				30..39	No function
				40..79	No function
				80..84	All Motor reset
				85..87	Scan motor reset
				88..90	Colors motor reset
				91..93	Gobo motor reset
				94..96	No function
				97..99	No function
				100..104	Internal program 1
				105..109	Internal program 2
				110..114	Internal program 3
				115..119	Internal program 4
				120..124	Internal program 5
				125..129	Internal program 6
				130..134	Internal program 7
				135..139	Internal program 8
				140..144	Internal program 9
				145..149	Internal program 10
				150..154	Internal program 11
				155..159	Internal program 12
				160..164	Internal Sound program 1
				165..169	Internal Sound program 2
170..174	Internal Sound program 3				
175..179	Internal Sound program 4				
180..184	Internal Sound program 5				
185..189	Internal Sound program 6				
190..194	Internal Sound program 7				
195..199	Internal Sound program 8				
200..204	Internal Sound program 9				
205..209	Internal Sound program 10				
210..214	Internal Sound program 11				
215..255	Internal Sound program 12				
19	9	19	19		<b>Frame Dimmer</b>
				0..255	Dimmer 0%...100%
20	10	20	20		<b>Warm Shutter</b>
				0..31	Shutter closed
				32..63	shutter open
				64..95	Strobe effect slow to fast
				96..127	shutter open
				128..159	Pulse-effect in sequences slow to fast
				160..191	shutter open
				192..223	Random strobe effect slow to fast
224..255	shutter open				

21	11	21	21		Warm
				0..255	0-100% Warm dimmer from dark to bright
					Warm 1
				0..255	0-100% Warm 1 dimmer from dark to bright
					Warm 2
				0..255	0-100% Warm 2 dimmer from dark to bright
					Warm 3
				0..255	0-100% Warm 3 dimmer from dark to bright
					Warm 4
				0..255	0-100% Warm 4 dimmer from dark to bright
					Warm 5
				0..255	0-100% Warm 5 dimmer from dark to bright
	Warm 6				
0..255	0-100% Warm 6 dimmer from dark to bright				
	Warm 7				
0..255	0-100% Warm 7 dimmer from dark to bright				
	Warm 8				
0..255	0-100% Warm 8 dimmer from dark to bright				
	Warm 9				
0..255	0-100% Warm 9 dimmer from dark to bright				
	Warm 10				
0..255	0-100% Warm 10 dimmer from dark to bright				
	Warm 11				
0..255	0-100% Warm 11 dimmer from dark to bright				
	Warm 12				
0..255	0-100% Warm 12 dimmer from dark to bright				
22	12	34	22		Warm Macro
				0..20	No Function
				21..30	Warm Macro Scene1
				31..40	Warm Macro Scene2
				41..50	Warm Macro Scene3
				51..60	Warm Macro Scene4
				61..70	Warm Macro Scene5
				71..80	Warm Macro Scene6
				81..90	Warm Macro Scene7
				91..100	Warm Macro Scene8
				101..110	Warm Macro Scene9
				111..120	Warm Macro Scene10
				121..130	Warm Macro Scene11
				131..140	Warm Macro Scene12
				141..150	Warm Macro Scene13
				151..160	Warm Macro Scene14
				161..170	Warm Macro Scene15
				171..180	Warm Macro Scene16
				181..190	Warm Macro Scene17
				191..200	Warm Macro Scene18
201..210	Warm Macro Scene19				
211..220	Warm Macro Scene20				
221..230	Warm Macro Sound1				
231..240	Warm Macro Sound2				
241..250	Warm Macro Sound3				
251..255	Warm MacroSound4				

23	13	35	23		<b>Warm Macro_Speed</b>
				0..255	Warm Macro Speed from Slow to Fast
24	14	36	24		<b>Lamp_Shutter</b>
				0..31	Shutter closed
				32..63	shutter open
				64..95	Strobe effect slow to fast
				96..127	shutter open
				128..159	Pulse-effect in sequences slow to fast
				160..191	shutter open
				192..223	Random strobe effect slow to fast
				224..255	shutter open
25	15	37	25		<b>Lamp_Red</b>
				0..255	0-100% Lamp_Red dimmer from dark to bright
26	16	38	26		<b>Lamp_Green</b>
				0..255	0-100% Lamp_Green dimmer from dark to bright
27	17	39	27		<b>Lamp_Blue</b>
				0..255	0-100% Lamp_Blue dimmer from dark to bright
		40			<b>Lamp_Red 1</b>
				0..255	0-100% Lamp_Red 1 dimmer from dark to bright
		41			<b>Lamp_Green 1</b>
				0..255	0-100% Lamp_Green 1 dimmer from dark to bright
		42			<b>Lamp_Blue 1</b>
				0..255	0-100% Lamp_Blue 1 dimmer from dark to bright
		43			<b>Lamp_Red 2</b>
				0..255	0-100% Lamp_Red 2 dimmer from dark to bright
		44			<b>Lamp_Green 2</b>
				0..255	0-100% Lamp_Green 2 dimmer from dark to bright
		45			<b>Lamp_Blue 2</b>
				0..255	0-100% Lamp_Blue 2 dimmer from dark to bright
		46			<b>Lamp_Red 3</b>
				0..255	0-100% Lamp_Red 3 dimmer from dark to bright
		47			<b>Lamp_Green 3</b>
				0..255	0-100% Lamp_Green 3 dimmer from dark to bright
		48			<b>Lamp_Blue 3</b>
				0..255	0-100% Lamp_Blue 3 dimmer from dark to bright
		49			<b>Lamp_Red 4</b>
				0..255	0-100% Lamp_Red 4 dimmer from dark to bright
		50			<b>Lamp_Green 4</b>
				0..255	0-100% Lamp_Green 4 dimmer from dark to bright
		51			<b>Lamp_Blue 4</b>
				0..255	0-100% Lamp_Blue 4 dimmer from dark to bright
		52			<b>Lamp_Red 5</b>
				0..255	0-100% Lamp_Red 5 dimmer from dark to bright
		53			<b>Lamp_Green 5</b>
				0..255	0-100% Lamp_Green 5 dimmer from dark to bright
		54			<b>Lamp_Blue 5</b>
				0..255	0-100% Lamp_Blue 5 dimmer from dark to bright
		55			<b>Lamp_Red 6</b>
				0..255	0-100% Lamp_Red 6 dimmer from dark to bright

		56			Lamp_Green 6
				0..255	0-100% Lamp_Green 6 dimmer from dark to bright
		57			Lamp_Blue 6
				0..255	0-100% Lamp_Blue 6 dimmer from dark to bright
		58			Lamp_Red 7
				0..255	0-100% Lamp_Red 7 dimmer from dark to bright
		59			Lamp_Green 7
				0..255	0-100% Lamp_Green 7 dimmer from dark to bright
		60			Lamp_Blue 7
				0..255	0-100% Lamp_Blue 7 dimmer from dark to bright
		61			Lamp_Red 8
				0..255	0-100% Lamp_Red 8 dimmer from dark to bright
		62			Lamp_Green 8
				0..255	0-100% Lamp_Green 8 dimmer from dark to bright
		63			Lamp_Blue 8
				0..255	0-100% Lamp_Blue 8 dimmer from dark to bright
28	18	64	28		Lamp Macro
				0..20	No Function
				21..35	Lamp Macro Scene1
				36..50	Lamp Macro Scene2
				51..65	Lamp Macro Scene3
				66..80	Lamp Macro Scene4
				81..95	Lamp Macro Scene5
				96..110	Lamp Macro Scene6
				111..125	Lamp Macro Scene7
				126..140	Lamp Macro Scene8
				141..155	Lamp Macro Scene9
				156..170	Lamp Macro Scene10
				171..185	Lamp Macro Scene11
				186..200	Lamp Macro Scene12
				201..215	Lamp Macro Sound1
216..230	Lamp Macro Sound2				
231..245	Lamp Macro Sound3				
246..255	Lamp MacroSound4				
29	19	65	29		Lamp Macro_Speed
				0..255	Lamp Macro Speed from Slow to Fast
30	20	66	30		Cool Shutter
				0..31	Shutter closed
				32..63	shutter open
				64..95	Strobe effect slow to fast
				96..127	shutter open
				128..159	Pulse-effect in sequences slow to fast
				160..191	shutter open
				192..223	Random strobe effect slow to fast
224..255	shutter open				
31	21	67	31		Cool
				0..255	0-100% Cool dimmer from dark to bright
		68			Cool 1
				0..255	0-100% Cool 1 dimmer from dark to bright

		69			Cool 2
				0..255	0-100% Cool 2 dimmer from dark to bright
		70			Cool 3
				0..255	0-100% Cool 3 dimmer from dark to bright
		71			Cool 4
				0..255	0-100% Cool 4 dimmer from dark to bright
		72			Cool 5
				0..255	0-100% Cool 5 dimmer from dark to bright
		73			Cool 6
				0..255	0-100% Cool 6 dimmer from dark to bright
		74			Cool 7
				0..255	0-100% Cool 7 dimmer from dark to bright
		75			Cool 8
				0..255	0-100% Cool 8 dimmer from dark to bright
		76			Cool 9
				0..255	0-100% Cool 9 dimmer from dark to bright
		77			Cool 10
				0..255	0-100% Cool 10 dimmer from dark to bright
		78			Cool 11
				0..255	0-100% Cool 11 dimmer from dark to bright
		79			Cool 12
				0..255	0-100% Cool 12 dimmer from dark to bright
					Cool Macro
				0..20	No Function
				21..30	Cool Macro Scene1
				31..40	Cool Macro Scene2
				41..50	Cool Macro Scene3
				51..60	Cool Macro Scene4
				61..70	Cool Macro Scene5
				71..80	Cool Macro Scene6
				81..90	Cool Macro Scene7
				91..100	Cool Macro Scene8
				101..110	Cool Macro Scene9
				111..120	Cool Macro Scene10
				121..130	Cool Macro Scene11
				131..140	Cool Macro Scene12
				141..150	Cool Macro Scene13
				151..160	Cool Macro Scene14
				161..170	Cool Macro Scene15
				171..180	Cool Macro Scene16
				181..190	Cool Macro Scene17
				191..200	Cool Macro Scene18
				201..210	Cool Macro Scene19
				211..220	Cool Macro Scene20
				221..230	Cool Macro Sound1
				231..240	Cool Macro Sound2
				241..250	Cool Macro Sound3
				251..255	Cool MacroSound4
32	22	80	32		
					Cool Macro_Speed
33	23	81	33	0..255	Cool Macro Speed from Slow to Fast

34	24	82	34		ALL Macro
				0..25	No Function
				26..38	ALL Macro Scene1
				39..51	ALL Macro Scene2
				52..64	ALL Macro Scene3
				65..77	ALL Macro Scene4
				78..90	ALL Macro Scene5
				91..103	ALL Macro Scene6
				104..116	ALL Macro Scene7
				117..129	ALL Macro Scene8
				130..142	ALL Macro Scene9
				143..155	ALL Macro Scene10
				156..168	ALL Macro Sound1
				169..181	ALL Macro Sound2
				182..194	ALL Macro Sound3
195..207	ALL MacroSound4				
208..220	ALL Macro Sound5				
221..233	ALL Macro Sound6				
234..246	ALL Macro Sound7				
247..255	ALL MacroSound8				
35	25	83	35		ALL Macro_Speed
				0..255	ALL Macro Speed from Slow to Fast
<b>The 36-45 Channel is Work of "Special function Channel" value 100-255</b>					
			36		Lamp Macro for Auto&Sound
				0	Vary Follow Special function Channel
				1	Warm Macro 1
				2	Warm Macro 2
				3	Warm Macro 3
				4	Warm Macro 4
				5	Warm Macro 5
				6	Warm Macro 6
				7	Warm Macro 7
				8	Warm Macro 8
				9	Warm Macro 9
				10	Warm Macro 10
				11	Warm Macro 11
				12	Warm Macro 12
				13	Sound Warm Macro 1
				14	Sound Warm Macro 2
				15	Sound Warm Macro 3
				16	Sound Warm Macro 4
				17	Sound Warm Macro 5
				18	Sound Warm Macro 6
				19	Sound Warm Macro 7
				20	Sound Warm Macro 8
				21	Sound Warm Macro 9
				22	Sound Warm Macro 10
23	Sound Warm Macro 11				



		36	24	Sound Warm Macro 12
			25	Warm Light up or Strobe need Control Warm Shutter channel
			26..255	Shut Off Warm
		37		Warm Macro Speed for Auto&Sound
			0..255	Speed from Slow to Fast
		38		Lamp Macro for Auto&Sound
			0	Vary Follow Special function Channel
			1	Lamp Macro 1
			2	Lamp Macro 2
			3	Lamp Macro 3
			4	Lamp Macro 4
			5	Lamp Macro 5
			6	Lamp Macro 6
			7	Lamp Macro 7
			8	Lamp Macro 8
			9	Lamp Macro 9
			10	Lamp Macro 10
			11	Lamp Macro 11
			12	Lamp Macro 12
			13	Sound Lamp Macro 1
			14	Sound Lamp Macro 2
			15	Sound Lamp Macro 3
			16	Sound Lamp Macro 4
			17	Sound Lamp Macro 5
			18	Sound Lamp Macro 6
			19	Sound Lamp Macro 7
			20	Sound Lamp Macro 8
			21	Sound Lamp Macro 9
			22	Sound Lamp Macro 10
			23	Sound Lamp Macro 11
			24	Sound Lamp Macro 12
			25	Shut Off Lamp
			26-50	Custom Mixed Color is of Channel : [Lamp_Red,Lamp_Green,Lamp_Blue]
			26	Custom Mixed Color Light up or Strobe need Control Lamp Shutter channel
			27	Custom Mixed Color Macro 1
			28	Custom Mixed Color Macro 2
			29	Custom Mixed Color Macro 3
			30	Custom Mixed Color Macro 4
			31	Custom Mixed Color Macro 5
			32	Custom Mixed Color Macro 6
			33	Custom Mixed Color Macro 7
		34	Custom Mixed Color Macro 8	
		35	Custom Mixed Color Macro 9	
		36	Custom Mixed Color Macro 10	

			37	Custom Mixed Color Macro 11
			38	Custom Mixed Color Macro 12
			39	Sound Custom Mixed Color Macro 1
			40	Sound Custom Mixed Color Macro 2
			41	Sound Custom Mixed Color Macro 3
			42	Sound Custom Mixed Color Macro 4
			43	Sound Custom Mixed Color Macro 5
			44	Sound Custom Mixed Color Macro 6
			45	Sound Custom Mixed Color Macro 7
			46	Sound Custom Mixed Color Macro 8
			47	Sound Custom Mixed Color Macro 9
			48	Sound Custom Mixed Color Macro 10
			49	Sound Custom Mixed Color Macro 11
			50	Sound Custom Mixed Color Macro 12
			51..255	Shut Off Lamp
			39	<b>Lamp Macro Speed for Auto&amp;Sound</b>
			0..255	Speed from Slow to Fast
				<b>Cool Macro for Auto&amp;Sound</b>
			0	Vary Follow Special function Channel
			1	Cool Macro 1
			2	Cool Macro 2
			3	Cool Macro 3
			4	Cool Macro 4
			5	Cool Macro 5
			6	Cool Macro 6
			7	Cool Macro 7
			8	Cool Macro 8
			9	Cool Macro 9
			10	Cool Macro 10
			11	Cool Macro 11
			12	Cool Macro 12
			13	Sound Cool Macro 1
			14	Sound Cool Macro 2
			15	Sound Cool Macro 3
			16	Sound Cool Macro 4
			17	Sound Cool Macro 5
			18	Sound Cool Macro 6
			19	Sound Cool Macro 7
			20	Sound Cool Macro 8
			21	Sound Cool Macro 9
			22	Sound Cool Macro 10
			23	Sound Cool Macro 11
			24	Sound Cool Macro 12
			25	Cool Light up or Strobe <b>need Control Cool Shutter channel</b>
			26..255	Shut Off Cool
			41	<b>Cool Macro Speed for Auto&amp;Sound</b>
			0..255	Speed from Slow to Fast
				<b>Uint 1 Macro for Auto&amp;Sound</b>
			42	Vary Follow Special function Channel
			1	Uint 1 Macro 1
			2	Uint 1 Macro 2

		42	3	Uint 1 Macro 3
			4	Uint 1 Macro 4
			5	Uint 1 Macro 5
			6	Uint 1 Macro 6
			7	Uint 1 Macro 7
			8	Uint 1 Macro 8
			9	Uint 1 Macro 9
			10	Uint 1 Macro 10
			11	Uint 1 Macro 11
			12	Uint 1 Macro 12
			13	Sound Uint 1 Macro 1
			14	Sound Uint 1 Macro 2
			15	Sound Uint 1 Macro 3
			16	Sound Uint 1 Macro 4
			17	Sound Uint 1 Macro 5
			18	Sound Uint 1 Macro 6
			19	Sound Uint 1 Macro 7
			20	Sound Uint 1 Macro 8
			21	Sound Uint 1 Macro 9
			22	Sound Uint 1 Macro 10
			23	Sound Uint 1 Macro 11
			24	Sound Uint 1 Macro 12
			26..255	Shut Off Uint 1
0..255	Speed from Slow to Fast			
		44		<b>Uint 2 Macro for Auto&amp;Sound</b>
			0	Vary Follow Special function Channel
			1	Uint 2 Macro 1
			2	Uint 2 Macro 2
			3	Uint 2 Macro 3
			4	Uint 2 Macro 4
			5	Uint 2 Macro 5
			6	Uint 2 Macro 6
			7	Uint 2 Macro 7
			8	Uint 2 Macro 8
			9	Uint 2 Macro 9
			10	Uint 2 Macro 10
			11	Uint 2 Macro 11
			12	Uint 2 Macro 12
			13	Sound Uint 2 Macro 1
			14	Sound Uint 2 Macro 2
			15	Sound Uint 2 Macro 3
			16	Sound Uint 2 Macro 4
			17	Sound Uint 2 Macro 5
			18	Sound Uint 2 Macro 6
			19	Sound Uint 2 Macro 7
			20	Sound Uint 2 Macro 8
			21	Sound Uint 2 Macro 9
			22	Sound Uint 2 Macro 10
			23	Sound Uint 2 Macro 11
			24	Sound Uint 2 Macro 12
26..255	Shut Off Uint 2			
		45		<b>Uint 2 Macro Speed for Auto&amp;Sound</b>
			0..255	Speed from Slow to Fast

## MIN Mode 23CH

		<b>Special function</b>
	0..19	No function
	20..29	No function
	30..39	No function
	40..79	No function
	80..84	No function
	85..87	No function
	88..90	No function
	91..93	No function
	94..96	No function
	97..99	No function
	100..104	Internal program 1
	105..109	Internal program 2
	110..114	Internal program 3
	115..119	Internal program 4
	120..124	Internal program 5
	125..129	Internal program 6
1	130..134	Internal program 7
	135..139	Internal program 8
	140..144	Internal program 9
	145..149	Internal program 10
	150..154	Internal program 11
	155..159	Internal program 12
	160..164	Internal Sound program 1
	165..169	Internal Sound program 2
	170..174	Internal Sound program 3
	175..179	Internal Sound program 4
	180..184	Internal Sound program 5
	185..189	Internal Sound program 6
	190..194	Internal Sound program 7
	195..199	Internal Sound program 8
	200..204	Internal Sound program 9
	205..209	Internal Sound program 10
	210..214	Internal Sound program 11
	215..255	Internal Sound program 12
2		<b>Internal program Speed</b> <b>(if Special function Channl in 100~164)</b>
	0..255	slow to fast
3		<b>Sound Sensitivity</b>
	0..255	Sound Sensitivity 15-100%

4		<b>Move Head</b>
	0..8	Vary Follow Special function Channel
	9..17	Move Head 1
	18..26	Move Head 2
	27..35	Move Head 3
	36..44	Move Head 4
	45..53	Move Head 5
	54..62	Move Head 6
	63..71	Move Head 7
	72..80	Move Head 8
	81..89	Move Head 9
	90..98	Move Head 10
	99..107	Move Head 11
	108..116	Move Head 12
	117..125	Sound Move Head 1
	126..134	Sound Move Head 2
	135..143	Sound Move Head 3
	144..152	Sound Move Head 4
	153..161	Sound Move Head 5
	162..170	Sound Move Head 6
171..179	Sound Move Head 7	
180..188	Sound Move Head 8	
189..197	Sound Move Head 9	
198..206	Sound Move Head 10	
207..215	Sound Move Head 11	
216..224	Sound Move Head 12	
225..255	SPOT Move Head	
5		<b>Move Head Speed for Auto&amp;Sound</b>
	0..0	Vary Follow "Internal program Speed" Channel
	1..255	Speed from Slow to Fast
6		<b>Warm Shutter</b>
	0..31	Shutter closed
	32..63	shutter open
	64..95	Strobe effect slow to fast
	96..127	shutter open
	128..159	Pulse-effect in sequences slow to fast
	160..191	shutter open
	192..223	Random strobe effect slow to fast
224..255	shutter open	
7		<b>Warm</b>
	0..255	0-100% Warm dimmer from dark to bright
8		<b>Lamp Macro for Auto&amp;Sound</b>
	0..8	Vary Follow Special function Channel
	9..17	Warm Macro 1

8	18..26	Warm Macro 2
	27..35	Warm Macro 3
	36..44	Warm Macro 4
	45..53	Warm Macro 5
	54..62	Warm Macro 6
	63..71	Warm Macro 7
	72..80	Warm Macro 8
	81..89	Warm Macro 9
	90..98	Warm Macro 10
	99..107	Warm Macro 11
	108..116	Warm Macro 12
	117..125	Sound Warm Macro 1
	126..134	Sound Warm Macro 2
	135..143	Sound Warm Macro 3
	144..152	Sound Warm Macro 4
	153..161	Sound Warm Macro 5
	162..170	Sound Warm Macro 6
	171..179	Sound Warm Macro 7
	180..188	Sound Warm Macro 8
	189..197	Sound Warm Macro 9
198..206	Sound Warm Macro 10	
207..215	Sound Warm Macro 11	
216..224	Sound Warm Macro 12	
225..235	Warm Light up or Strobe need Control Warm Shutter channel	
234..255	Shut Off Warm	
9		Warm Macro Speed for Auto&Sound
	0..0	Vary Follow "Internal program Speed" Channel
	1..255	Speed from Slow to Fast
10		Lamp Shutter
	0..31	Shutter closed
	32..63	shutter open
	64..95	Strobe effect slow to fast
	96..127	shutter open
	128..159	Pulse-effect in sequences slow to fast
	160..191	shutter open
	192..223	Random strobe effect slow to fast
224..255	shutter open	
11		Lamp_Red
	0..255	0-100% Lamp_Red dimmer from dark to bright
12		Lamp_Green
	0..255	0-100% Lamp_Green dimmer from dark to bright
13		Lamp_Blue
	0..255	0-100% Lamp_Blue dimmer from dark to bright

		<b>Lamp Macro for Auto&amp;Sound</b>
	0..3	Vary Follow Special function Channel
	4..7	Lamp Macro 1
	8..11	Lamp Macro 2
	12..15	Lamp Macro 3
	16..19	Lamp Macro 4
	20..23	Lamp Macro 5
	24..27	Lamp Macro 6
	28..31	Lamp Macro 7
	32..35	Lamp Macro 8
	36..39	Lamp Macro 9
	40..43	Lamp Macro 10
	44..47	Lamp Macro 11
	48..51	Lamp Macro 12
	52..55	Sound Lamp Macro 1
	56..59	Sound Lamp Macro 2
	60..63	Sound Lamp Macro 3
	64..67	Sound Lamp Macro 4
	68..71	Sound Lamp Macro 5
	72..75	Sound Lamp Macro 6
	76..79	Sound Lamp Macro 7
14	80..83	Sound Lamp Macro 8
	84..87	Sound Lamp Macro 9
	88..91	Sound Lamp Macro 10
	92..95	Sound Lamp Macro 11
	96..99	Sound Lamp Macro 12
	100..103	Shut Off Lamp
		<b>Custom Mixed Color is of Channel : [Lamp_Red,Lamp_Green,Lamp_Blue]</b>
	104..107	<b>Custom Mixed Color Light up or Strobe need Control Lamp Shutter channel</b>
	108..111	Custom Mixed Color Macro 1
	112..115	Custom Mixed Color Macro 2
	116..119	Custom Mixed Color Macro 3
	120..123	Custom Mixed Color Macro 4
	124..127	Custom Mixed Color Macro 5
	128..131	Custom Mixed Color Macro 6
	132..135	Custom Mixed Color Macro 7
	136..139	Custom Mixed Color Macro 8
	140..143	Custom Mixed Color Macro 9
	144..147	Custom Mixed Color Macro 10
	148..151	Custom Mixed Color Macro 11
	152..155	Custom Mixed Color Macro 12

14	156..159	Sound Custom Mixed Color Macro 1
	160..163	Sound Custom Mixed Color Macro 2
	164..167	Sound Custom Mixed Color Macro 3
	168..171	Sound Custom Mixed Color Macro 4
	172..175	Sound Custom Mixed Color Macro 5
	176..179	Sound Custom Mixed Color Macro 6
	180..183	Sound Custom Mixed Color Macro 7
	184..187	Sound Custom Mixed Color Macro 8
	188..191	Sound Custom Mixed Color Macro 9
	192..195	Sound Custom Mixed Color Macro 10
	196..199	Sound Custom Mixed Color Macro 11
	200..203	Sound Custom Mixed Color Macro 12
204..255	Shut Off Lamp	
15		<b>Lamp Macro Speed for Auto&amp;Sound</b>
	0..0	Vary Follow "Internal program Speed" Channel
	1..255	Speed from Slow to Fast
16		<b>Cool Shutter</b>
	0..31	Shutter closed
	32..63	shutter open
	64..95	Strobe effect slow to fast
	96..127	shutter open
	128..159	Pulse-effect in sequences slow to fast
	160..191	shutter open
	192..223	Random strobe effect slow to fast
224..255	shutter open	
17		<b>Cool</b>
	0..255	0-100% Cool dimmer from dark to bright
18		<b>Cool Macro for Auto&amp;Sound</b>
	0..8	Vary Follow Special function Channel
	9..17	Cool Macro 1
	18..26	Cool Macro 2
	27..35	Cool Macro 3
	36..44	Cool Macro 4
	45..53	Cool Macro 5
	54..62	Cool Macro 6
	63..71	Cool Macro 7
	72..80	Cool Macro 8
	81..89	Cool Macro 9
	90..98	Cool Macro 10
	99..107	Cool Macro 11
	108..116	Cool Macro 12
117..125	Sound Cool Macro 1	
126..134	Sound Cool Macro 2	



18	135..143	Sound Cool Macro 3
	144..152	Sound Cool Macro 4
	153..161	Sound Cool Macro 5
	162..170	Sound Cool Macro 6
	171..179	Sound Cool Macro 7
	180..188	Sound Cool Macro 8
	189..197	Sound Cool Macro 9
	198..206	Sound Cool Macro 10
	207..215	Sound Cool Macro 11
	216..224	Sound Cool Macro 12
	225..235	Cool Light up or Strobe <b>need Control Cool Shutter channel</b>
234..255	Shut Off Cool	
19		<b>Cool Macro Speed for Auto&amp;Sound</b>
	0..0	Vary Follow <b>"Internal program Speed"</b> Channel
	1..255	Speed from Slow to Fast
20		<b>Uint 1 Macro for Auto&amp;Sound</b>
	0..8	Vary Follow Special function Channel
	9..17	Uint 1 Macro 1
	18..26	Uint 1 Macro 2
	27..35	Uint 1 Macro 3
	36..44	Uint 1 Macro 4
	45..53	Uint 1 Macro 5
	54..62	Uint 1 Macro 6
	63..71	Uint 1 Macro 7
	72..80	Uint 1 Macro 8
	81..89	Uint 1 Macro 9
	90..98	Uint 1 Macro 10
	99..107	Uint 1 Macro 11
	108..116	Uint 1 Macro 12
	117..125	Sound Uint 1 Macro 1
	126..134	Sound Uint 1 Macro 2
	135..143	Sound Uint 1 Macro 3
	144..152	Sound Uint 1 Macro 4
	153..161	Sound Uint 1 Macro 5
	162..170	Sound Uint 1 Macro 6
	171..179	Sound Uint 1 Macro 7
	180..188	Sound Uint 1 Macro 8
	189..197	Sound Uint 1 Macro 9
	198..206	Sound Uint 1 Macro 10
207..215	Sound Uint 1 Macro 11	
216..224	Sound Uint 1 Macro 12	
225..255	Shut Off Uint 1	

21		<b>Uint 1 Macro Speed for Auto&amp;Sound</b>
	0..0	Vary Follow " <b>Internal program Speed</b> " Channel
	1..255	Speed from Slow to Fast
22		<b>Uint 2 Macro for Auto&amp;Sound</b>
	0..8	Vary Follow Special function Channel
	9..17	Uint 2 Macro 1
	18..26	Uint 2 Macro 2
	27..35	Uint 2 Macro 3
	36..44	Uint 2 Macro 4
	45..53	Uint 2 Macro 5
	54..62	Uint 2 Macro 6
	63..71	Uint 2 Macro 7
	72..80	Uint 2 Macro 8
	81..89	Uint 2 Macro 9
	90..98	Uint 2 Macro 10
	99..107	Uint 2 Macro 11
	108..116	Uint 2 Macro 12
	117..125	Sound Uint 2 Macro 1
	126..134	Sound Uint 2 Macro 2
	135..143	Sound Uint 2 Macro 3
	144..152	Sound Uint 2 Macro 4
	153..161	Sound Uint 2 Macro 5
	162..170	Sound Uint 2 Macro 6
	171..179	Sound Uint 2 Macro 7
	180..188	Sound Uint 2 Macro 8
189..197	Sound Uint 2 Macro 9	
198..206	Sound Uint 2 Macro 10	
207..215	Sound Uint 2 Macro 11	
216..224	Sound Uint 2 Macro 12	
225..255	Shut Off Uint 2	
23		<b>Uint 2 Macro Speed for Auto&amp;Sound</b>
	0..0	Vary Follow " <b>Internal program Speed</b> " Channel
	1..255	Speed from Slow to Fast

Versa Flex Par Duo 324 DMX CHART				
Mode/Channel			Value	Function
Simple 14CH	Same 07CH	Full 32CH		The selection and collocation of different mode.Simple occuppies less channels,Same mode occuppies very few channels,Full is full channel operation
1	1	1		<b>Head 1 Dimmer</b>
			0..255	Dimmer 0%...100%
2	2	2		<b>Head 1 Shutter</b>
			0..31	Shutter Closed
			32..63	Shutter Open
			64..95	Strobe Effect Slow to Fast
			96..127	Shutter Open
			128..159	Pulse-effect in Sequences Slow to Fast
			160..191	Shutter Open
			192..223	Random Strobe Effect Slow to Fast
3	3	3		<b>Head 1 Warm White</b>
			0..255	0-100% Warm White Dimmer from Dark to Bright
4	4	4		<b>Head 1 Cold White</b>
			0..255	0-100% Cold White Dimmer from Dark to Bright
5	5	5		<b>Head 1 Color Temp</b>
			0..15	No Function
			16..45	Below 3200K
			46..75	3200K - 3500K
			76..105	3500K - 5000K
			106..135	5000K - 5500K
			136..165	5500K - 6000K
			166..195	6000K - 6500K
			196..225	6500K - 7000K
226..255	7000K - 8000K			
6	6	6		<b>Head 1 Macro Run</b>
			0..15	No function
			16..27	Macro Run 1
			28..39	Macro Run 2
			40..51	Macro Run 3
			52..63	Macro Run 4
			64..75	Macro Run 5
			76..87	Macro Run 6
			88..99	Macro Run 7
			100..111	Macro Run 8
			112..123	Macro Run 9
			124..135	Macro Run 10
136..147	Macro Run 11			

6	6	6	148..159	Macro Run 12
			160..171	Macro Run 13
			172..183	Macro Run 14
			184..195	Macro Run 15
			196..207	Macro Sound 1
			208..219	Macro Sound 2
			220..231	Macro Sound 3
			232..243	Macro Sound 4
7	7	7		<b>Head 1 Macro Speed</b>
			0..255	Macro Speed from Slow To Fast
8	2	18	8	<b>Head 1 Warm White of Ring 1</b>
			0..255	0-100% Warm White of Ring 1 Dimmer from Dark to Bright
			9	<b>Head 1 Cold White of Ring 2</b>
			0..255	0-100% Cold White of Ring 2 Dimmer from Dark to Bright
			10	<b>Head 1 Warm White of Ring 3</b>
			0..255	0-100% Warm White of Ring 3 Dimmer from Dark to Bright
			11	<b>Head 1 Cold White of Ring 4</b>
			0..255	0-100% Cold White of Ring 4 Dimmer from Dark to Bright
			12	<b>Head 1 Warm White of Ring 5</b>
			0..255	0-100% Warm White of Ring 5 Dimmer from Dark to Bright
			13	<b>Head 1 Cold White of Ring 6</b>
			0..255	0-100% Cold White of Ring 6 Dimmer from Dark to Bright
			14	<b>Head 1 Warm White of Ring 7</b>
			0..255	0-100% Warm White of Ring 7 Dimmer from Dark to Bright
			15	<b>Head 1 Cold White of Ring 8</b>
			0..255	0-100% Cold White of Ring 8 Dimmer from Dark to Bright
8	1	17		<b>Head 2 Dimmer</b>
			0..255	Dimmer 0%...100%
9	2	18		<b>Head 2 Shutter</b>
			0..31	Shutter Closed
			32..63	Shutter Open
			64..95	Strobe Effect Slow to Fast
			96..127	Shutter Open
			128..159	Pulse-effect in Sequences Slow to Fast
			160..191	Shutter Open
			192..223	Random Strobe Effect Slow to Fast
224..255	Shutter Open			
10	3	19		<b>Head 2 Warm White</b>
			0..255	0-100% Warm White Dimmer from Dark to Bright
11	4	20		<b>Head 2 Cold White</b>
			0..255	0-100% Cold White Dimmer from Dark to Bright
12	5	21		<b>Head 2 Color Temp</b>
			0..15	No Function

12	5	21	16..45	Below 3200K
			46..75	3200K - 3500K
			76..105	3500K - 5000K
			106..135	5000K - 5500K
			136..165	5500K - 6000K
			166..195	6000K - 6500K
			196..225	6500K - 7000K
			226..255	7000K - 8000K
13	6	22		Head 2 Macro RUN
			0..15	No function
			16..27	Macro Run 1
			28..39	Macro Run 2
			40..51	Macro Run 3
			52..63	Macro Run 4
			64..75	Macro Run 5
			76..87	Macro Run 6
			88..99	Macro Run 7
			100..111	Macro Run 8
			112..123	Macro Run 9
			124..135	Macro Run 10
			136..147	Macro Run 11
			148..159	Macro Run 12
			160..171	Macro Run 13
			172..183	Macro Run 14
			184..195	Macro Run 15
			196..207	Macro Sound 1
208..219	Macro Sound 2			
220..231	Macro Sound 3			
232..243	Macro Sound 4			
244..255	Macro Sound 5			
14	7	23		Head 2 Macro Speed
			0..255	Macro Speed from Slow To Fast
		24		Head 2 Warm White of Ring 1
			0..255	0-100% Warm White of Ring 1 Dimmer from Dark to Bright
		25		Head 2 Cold White of Ring 2
			0..255	0-100% Cold White of Ring 2 Dimmer from Dark to Bright
		26		Head 2 Warm White of Ring 3
			0..255	0-100% Warm White of Ring 3 Dimmer from Dark to Bright
		27		Head 2 Cold White of Ring 4
			0..255	0-100% Cold White of Ring 4 Dimmer from Dark to Bright
		28		Head 2 Warm White of Ring 5
			0..255	0-100% Warm White of Ring 5 Dimmer from Dark to Bright
		29		Head 2 Cold White of Ring 6
			0..255	0-100% Cold White of Ring 6 Dimmer from Dark to Bright
		30		Head 2 Warm White of Ring 7
			0..255	0-100% Warm White of Ring 7 Dimmer from Dark to Bright
		31		Head 2 Cold White of Ring 8
0..255	0-100% Cold White of Ring 8 Dimmer from Dark to Bright			
32		Head 2 Warm White of Ring 9		
	0..255	0-100% Warm White of Ring 9 Dimmer from Dark to Bright		

Versa Flex Par Quad 19 DMX CHART				
Mode/Channel			Value	Function
Simple 20CH	Same 10CH	Full 44CH		The selection and collocation of different mode.Simple occuppies less channels,Same mode occuppies very few channels,Full is full channel operation
1	1	1		<b>Head 1 Dimmer</b>
			0..255	Dimmer 0%...100%
2	2	2		<b>Head 1 Shutter</b>
			0..31	Shutter Closed
			32..63	Shutter Open
			64..95	Strobe Effect Slow to Fast
			96..127	Shutter Open
			128..159	Pulse-effect in Sequences Slow to Fast
			160..191	Shutter Open
			192..223	Random Strobe Effect Slow to Fast
224..255	Shutter Open			
3	3	3		<b>Head 1 Red</b>
			0..255	0-100% Red Dimmer from Dark to Bright
4	4	4		<b>Head 1 Green</b>
			0..255	0-100% Green Dimmer from Dark to Bright
5	5	5		<b>Head 1 Blue</b>
			0..255	0-100% Blue Dimmer from Dark to Bright
6	6	6		<b>Head 1 White</b>
			0..255	0-100% White Dimmer from Dark to Bright
7	7	7		<b>Head 1 Macro Color</b>
			0..15	No Function
			16..31	Red
			32..47	Green
			48..63	Blue
			64..79	White
			80..95	Red+Green
			96..111	Red+Blue
			112..127	Red+White
			128..143	Green+Blue
			144..159	Green+White
			160..175	Blue+Wtihe
			176..191	R+G+B
			192..207	R+G+B+W
			208..212	2700K
			213..217	3200K
			218..222	3500K
			223..227	5000K
228..232	5500K			
233..237	6000K			
238..242	6500K			
243..247	7000K			
248..255	8000K			

8	8	8		<b>Head 1 Color Temp</b>
			0..15	No Function
			16..45	Below 3200K
			46..75	3200K - 3500K
			76..105	3500K - 5000K
			106..135	5000K - 5500K
			136..165	5500K - 6000K
			166..195	6000K - 6500K
			196..225	6500K - 7000K
			226..255	7000K - 8000K
9	9	9		<b>Head 1 Macro Run</b>
			0..15	No function
			16..31	Macro Run 1
			32..47	Macro Run 2
			48..63	Macro Run 3
			64..79	Macro Run 4
			80..95	Macro Run 5
			96..111	Macro Run 6
			112..127	Macro Run 7
			128..143	Macro Run 8
			144..159	Macro Sound 1
			160..175	Macro Sound 2
			176..191	Macro Sound 3
			192..207	Macro Sound 4
			208..223	Macro Sound 5
224..239	Macro Sound 6			
			240..255	Macro Sound 7
10	10	10		<b>Head 1 Macro Speed</b>
			0..255	Macro Speed from Slow To Fast
		11		<b>Head 1 Red1</b>
			0..255	0-100% Red1 Dimmer from Dark to Bright
		12		<b>Head 1 Green1</b>
			0..255	0-100% Green1 Dimmer from Dark to Bright
		13		<b>Head 1 Blue1</b>
			0..255	0-100% Blue1 Dimmer from Dark to Bright
		14		<b>Head 1 White1</b>
			0..255	0-100% White1 Dimmer from Dark to Bright
		15		<b>Head 1 Red2</b>
			0..255	0-100% Red2 Dimmer from Dark to Bright
		16		<b>Head 1 Green2</b>
			0..255	0-100% Green2 Dimmer from Dark to Bright
		17		<b>Head 1 Blue2</b>
			0..255	0-100% Blue2 Dimmer from Dark to Bright
		18		<b>Head 1 White2</b>
			0..255	0-100% White2 Dimmer from Dark to Bright
		19		<b>Head 1 Red3</b>
			0..255	0-100% Red3 Dimmer from Dark to Bright

		20		<b>Head 1 Green3</b>
			0..255	0-100% Green3 Dimmer from Dark to Bright
		21		
0..255	0-100% Blue3 Dimmer from Dark to Bright			
		22		<b>Head 1 White3</b>
			0..255	0-100% White3 Dimmer from Dark to Bright
11	1	23		<b>Head 2 Dimmer</b>
			0..255	Dimmer 0%...100%
12	2	24		<b>Head 2 Shutter</b>
			0..31	Shutter Closed
			32..63	Shutter Open
			64..95	Strobe Effect Slow to Fast
			96..127	Shutter Open
			128..159	Pulse-effect in Sequences Slow to Fast
			160..191	Shutter Open
			192..223	Random Strobe Effect Slow to Fast
224..255	Shutter Open			
13	3	25		<b>Head 2 Red</b>
			0..255	0-100% Red Dimmer from Dark to Bright
14	4	26		<b>Head 2 Green</b>
			0..255	0-100% Green Dimmer from Dark to Bright
15	5	27		<b>Head 2 Blue</b>
			0..255	0-100% Blue Dimmer from Dark to Bright
16	6	28		<b>Head 2 White</b>
			0..255	0-100% White Dimmer from Dark to Bright
17	7	29		<b>Head 2 Macro Color</b>
			0..15	No Function
			16..31	Red
			32..47	Green
			48..63	Blue
			64..79	White
			80..95	Red+Green
			96..111	Red+Blue
			112..127	Red+White
			128..143	Green+Blue
			144..159	Green+White
			160..175	Blue+Wtihe
			176..191	R+G+B
			192..207	R+G+B+W
			208..212	2700K
			213..217	3200K
			218..222	3500K
			223..227	5000K
228..232	5500K			
233..237	6000K			
238..242	6500K			
243..247	7000K			
248..255	8000K			



18	8	30		<b>Head 2 Color Temp</b>		
			0..15	No Function		
			16..45	Below 3200K		
			46..75	3200K - 3500K		
			76..105	3500K - 5000K		
			106..135	5000K - 5500K		
			136..165	5500K - 6000K		
			166..195	6000K - 6500K		
			196..225	6500K - 7000K		
226..255	7000K - 8000K					
19	9	31		<b>Head 2 Macro Run</b>		
			0..15	No function		
			16..31	Macro Run 1		
			32..47	Macro Run 2		
			48..63	Macro Run 3		
			64..79	Macro Run 4		
			80..95	Macro Run 5		
			96..111	Macro Run 6		
			112..127	Macro Run 7		
			128..143	Macro Run 8		
			144..159	Macro Sound 1		
			160..175	Macro Sound 2		
			176..191	Macro Sound 3		
			192..207	Macro Sound 4		
208..223	Macro Sound 5					
224..239	Macro Sound 6					
240..255	Macro Sound 7					
20	10	32		<b>Head 2 Macro Speed</b>		
			0..255	Macro Speed from Slow To Fast		
		33	0..255	<b>Head 2 Red1</b> 0-100% Red1 Dimmer from Dark to Bright		
		34	0..255	<b>Head 2 Green1</b> 0-100% Green1 Dimmer from Dark to Bright		
		35	0..255	<b>Head 2 Blue1</b> 0-100% Blue1 Dimmer from Dark to Bright		
		36	0..255	<b>Head 2 White1</b> 0-100% White1 Dimmer from Dark to Bright		
		37	0..255	<b>Head 2 Red2</b> 0-100% Red2 Dimmer from Dark to Bright		
		38	0..255	<b>Head 2 Green2</b> 0-100% Green2 Dimmer from Dark to Bright		
		39	0..255	<b>Head 2 Blue2</b> 0-100% Blue2 Dimmer from Dark to Bright		
		40	0..255	<b>Head 2 White2</b> 0-100% White2 Dimmer from Dark to Bright		
		41	0..255	<b>Head 2 Red3</b> 0-100% Red3 Dimmer from Dark to Bright		
		42	0..255	<b>Head 2 Green3</b> 0-100% Green3 Dimmer from Dark to Bright		
		43	0..255	<b>Head 2 Blue3</b> 0-100% Blue3 Dimmer from Dark to Bright		
		44	0..255	<b>Head 2 White3</b> 0-100% White3 Dimmer from Dark to Bright		
					0..255	0-100% White3 Dimmer from Dark to Bright

Versa Flex Par Tri 220 DMX CHART				
Mode/Channel			Value	Function
Simple 34CH	Same 17CH	Full 94CH		The selection and collocation of different mode.Simple occuppies less channels,Same mode occuppies very few channels,Full is full channel operation
1	1	1		Head 1 Dimmer
			0..255	Dimmer 0%...100%
2	2	2		Head 1 Shutter
			0..31	Shutter Closed
			32..63	Shutter Open
			64..95	Strobe Effect Slow to Fast
			96..127	Shutter Open
			128..159	Pulse-effect in Sequences Slow to Fast
			160..191	Shutter Open
			192..223	Random Strobe Effect Slow to Fast
3	3	3		Head 1 Red
			0..255	0-100% Red Dimmer from Dark to Bright
4	4	4		Head 1 Green
			0..255	0-100% Green Dimmer from Dark to Bright
5	5	5		Head 1 Blue
			0..255	0-100% Blue Dimmer from Dark to Bright
6	6	6		Head 1 Macro Color
			0..0	No Function
			1..15	Red
			16..31	Green
			32..47	Blue
			48..63	Red+Blue
			64..79	Red+Green
			80..95	Green+Blue
			96..111	Red+Blue+Green
			112..127	2700K
			128..143	3200K
			144..159	3500K
			160..175	5000K
			176..191	5500K
			192..207	6000K
			208..223	6500K
224..239	7000K			
240..255	8000K			
7	7	7		Head 1 Color Temp
			0..15	No Function
			16..45	Below 3200K
			46..75	3200K - 3500K
			76..105	3500K - 5000K
			106..135	5000K - 5500K
			136..165	5500K - 6000K
			166..195	6000K - 6500K
			196..225	6500K - 7000K
226..255	7000K - 8000K			

8	8	8		<b>Head 1 Macro Run</b>
			0..15	No function
			16..31	Macro Run 1
			32..47	Macro Run 2
			48..63	Macro Run 3
			64..79	Macro Run 4
			80..95	Macro Run 5
			96..111	Macro Run 6
			112..127	Macro Run 7
			128..143	Macro Run 8
			144..159	Macro Sound 1
			160..175	Macro Sound 2
			176..191	Macro Sound 3
			192..207	Macro Sound 4
			208..223	Macro Sound 5
224..239	Macro Sound 6			
240..255	Macro Sound 7			
9	9	9		<b>Head 1 Macro Speed</b>
			0..255	Macro Speed from Slow To Fast
10	10	10		<b>Head 1 Patterns</b>
			0..15	No Function
			016..029	Pix Dynamic Scene1
			30..43	Pix Dynamic Scene2
			44..57	Pix Dynamic Scene3
			58..71	Pix Dynamic Scene4
			72..85	Pix Dynamic Scene5
			86..99	Pix Dynamic Scene6
			100..113	Pix Dynamic Scene7
			114..127	Pix Dynamic Scene8
			128..143	Pix Dynamic Scene9
			142..155	Pix Dynamic Scene10
			156..169	Pix Dynamic Scene11
			170..183	Pix Dynamic Scene12
			184..197	Pix Dynamic Scene13
			198..211	Pix Dynamic Scene14
			212..225	Pix Dynamic Scene15
226..239	Pix Dynamic Scene16			
240..255	Pix Dynamic Scene17			
11	11	11		<b>Head 1 Patterns speed</b>
			0..255	Slow to Fast
12	12	12		<b>Head 1 Expand Patterns</b>
			0..15	No Function
			016..029	Pix Dynamic Scene1
			30..43	Pix Dynamic Scene2
			44..57	Pix Dynamic Scene3
			58..71	Pix Dynamic Scene4
			72..85	Pix Dynamic Scene5
			86..99	Pix Dynamic Scene6
			100..113	Pix Dynamic Scene7
			114..127	Pix Dynamic Scene8
			128..143	Pix Dynamic Scene9
			142..155	Pix Dynamic Scene10
156..169	Pix Dynamic Scene11			

12	12	12	170..183	Pix Dynamic Scene12
			184..197	Pix Dynamic Scene13
			198..211	Pix Dynamic Scene14
			212..225	Pix Dynamic Scene15
			226..239	Pix Dynamic Scene16
			240..255	Pix Dynamic Scene17
13	13	13		<b>Head 1 Foreground dimmer</b>
			0..255	Expand Patterns Foreground dimmer 0 – 100%. (Foreground Color Share with "Red,Green,Blue"Channel)
14	14	14		<b>Head 1 Background dimmer</b>
			0..255	Expand Patterns Background dimmer 0 – 100%.
15	15	15		<b>Head 1 Background Red</b>
			0..255	0-100%Background Red Dimmer from Dark to Bright
16	16	16		<b>Head 1 Background Green</b>
			0..255	0-100% Background Green Dimmer from Dark to Bright
17	17	17		<b>Head 1 Background Blue</b>
			0..255	0-100% Background Blue Dimmer from Dark to Bright
		18		<b>Head 1 Red in Ring 1</b>
			0..255	Red in Ring 1 Saturation Control (0-100%)
		19		<b>Head 1 Green in Ring 1</b>
			0..255	Green in Ring 1 Saturation Control (0-100%)
		20		<b>Head 1 Blue in Ring 1</b>
			0..255	Blue in Ring 1 Saturation Control (0-100%)
		21		<b>Head 1 Red in Ring 2</b>
			0..255	Red in Ring 2 Saturation Control (0-100%)
		22		<b>Head 1 Green in Ring 2</b>
			0..255	Green in Ring 2 Saturation Control (0-100%)
		23		<b>Head 1 Blue in Ring 2</b>
			0..255	Blue in Ring 2 Saturation Control (0-100%)
		24		<b>Head 1 Red in Ring 3</b>
			0..255	Red in Ring 3 Saturation Control (0-100%)
		25		<b>Head 1 Green in Ring 3</b>
			0..255	Green in Ring 3 Saturation Control (0-100%)
		26		<b>Head 1 Blue in Ring 3</b>
			0..255	Blue in Ring 3 Saturation Control (0-100%)
		27		<b>Head 1 Red in Ring 4</b>
			0..255	Red in Ring 4 Saturation Control (0-100%)
28		<b>Head 1 Green in Ring 4</b>		
	0..255	Green in Ring 4 Saturation Control (0-100%)		
29		<b>Head 1 Blue in Ring 4</b>		
	0..255	Blue in Ring 4 Saturation Control (0-100%)		
30		<b>Head 1 Red in Ring 5</b>		
	0..255	Red in Ring 5 Saturation Control (0-100%)		
31		<b>Head 1 Green in Ring 5</b>		
	0..255	Green in Ring 5 Saturation Control (0-100%)		
32		<b>Head 1 Blue in Ring 5</b>		
	0..255	Blue in Ring 5 Saturation Control (0-100%)		
33		<b>Head 1 Red in Ring 6</b>		
	0..255	Red in Ring 6 Saturation Control (0-100%)		

		34		<b>Head 1 Green in Ring 6</b>
			0..255	Green in Ring 6 Saturation Control (0-100%)
		35		<b>Head 1 Blue in Ring 6</b>
			0..255	Blue in Ring 6 Saturation Control (0-100%)
		36		<b>Head 1 Red in Ring 7</b>
			0..255	Red in Ring 7 Saturation Control (0-100%)
		37		<b>Head 1 Green in Ring 7</b>
			0..255	Green in Ring 7 Saturation Control (0-100%)
		38		<b>Head 1 Blue in Ring 7</b>
			0..255	Blue in Ring 7 Saturation Control (0-100%)
		39		<b>Head 1 Red in Ring 8</b>
			0..255	Red in Ring 8 Saturation Control (0-100%)
		40		<b>Head 1 Green in Ring 8</b>
			0..255	Green in Ring 8 Saturation Control (0-100%)
		41		<b>Head 1 Blue in Ring 8</b>
			0..255	Blue in Ring 8 Saturation Control (0-100%)
		42		<b>Head 1 Red in Ring 9</b>
	0..255	Red in Ring 9 Saturation Control (0-100%)		
43		<b>Head 1 Green in Ring 9</b>		
	0..255	Green in Ring 9 Saturation Control (0-100%)		
44		<b>Head 1 Blue in Ring 9</b>		
	0..255	Blue in Ring 9 Saturation Control (0-100%)		
45		<b>Head 1 Red in Ring 10</b>		
	0..255	Red in Ring 10 Saturation Control (0-100%)		
46		<b>Head 1 Green in Ring 10</b>		
	0..255	Green in Ring 10 Saturation Control (0-100%)		
47		<b>Head 1 Blue in Ring 10</b>		
	0..255	Blue in Ring 10 Saturation Control (0-100%)		
18	1	48		<b>Head 2 Dimmer</b>
			0..255	Dimmer 0%...100%
19	2	49		<b>Head 2 Shutter</b>
			0..31	Shutter Closed
			32..63	Shutter Open
			64..95	Strobe Effect Slow to Fast
			96..127	Shutter Open
			128..159	Pulse-effect in Sequences Slow to Fast
			160..191	Shutter Open
			192..223	Random Strobe Effect Slow to Fast
224..255	Shutter Open			
20	3	50		<b>Head 2 Red</b>
			0..255	0-100% Red Dimmer from Dark to Bright
21	4	51		<b>Head 2 Green</b>
			0..255	0-100% Green Dimmer from Dark to Bright
22	5	52		<b>Head 2 Blue</b>
			0..255	0-100% Blue Dimmer from Dark to Bright
23	6	53		<b>Head 2 Macro Color</b>
			0..0	No Function
			1..15	Red

23	6	53	16..31	Green
			32..47	Blue
			48..63	Red+Blue
			64..79	Red+Green
			80..95	Green+Blue
			96..111	Red+Blue+Green
			112..127	2700K
			128..143	3200K
			144..159	3500K
			160..175	5000K
			176..191	5500K
			192..207	6000K
			208..223	6500K
224..239	7000K			
240..255	8000K			
24	7	54		<b>Head 2 Color Temp</b>
			0..15	No Function
			16..45	Below 3200K
			46..75	3200K - 3500K
			76..105	3500K - 5000K
			106..135	5000K - 5500K
			136..165	5500K - 6000K
			166..195	6000K - 6500K
196..225	6500K - 7000K			
226..255	7000K - 8000K			
25	8	55		<b>Head 2 Macro RUN</b>
			0..15	No function
			16..31	Macro Run 1
			32..47	Macro Run 2
			48..63	Macro Run 3
			64..79	Macro Run 4
			80..95	Macro Run 5
			96..111	Macro Run 6
			112..127	Macro Run 7
			128..143	Macro Run 8
			144..159	Macro Sound 1
			160..175	Macro Sound 2
			176..191	Macro Sound 3
			192..207	Macro Sound 4
208..223	Macro Sound 5			
224..239	Macro Sound 6			
240..255	Macro Sound 7			
26	9	56		<b>Head 2 Macro Speed</b>
			0..255	Macro Speed from Slow To Fast
27	10	57		<b>Head 2 Patterns</b>
			0..15	No Function
			016..029	Pix Dynamic Scene1
			30..43	Pix Dynamic Scene2
			44..57	Pix Dynamic Scene3
			58..71	Pix Dynamic Scene4
			72..85	Pix Dynamic Scene5

27	10	57	86..99	Pix Dynamic Scene6	
			100..113	Pix Dynamic Scene7	
			114..127	Pix Dynamic Scene8	
			128..143	Pix Dynamic Scene9	
			142..155	Pix Dynamic Scene10	
			156..169	Pix Dynamic Scene11	
			170..183	Pix Dynamic Scene12	
			184..197	Pix Dynamic Scene13	
			198..211	Pix Dynamic Scene14	
			212..225	Pix Dynamic Scene15	
			226..239	Pix Dynamic Scene16	
			240..255	Pix Dynamic Scene17	
28	11	58		<b>Head 2 Patterns speed</b>	
			0..255	Slow to Fast	
29	12	59		<b>Head 2 Expand Patterns</b>	
			0..15	No Function	
			016..029	Pix Dynamic Scene1	
			30..43	Pix Dynamic Scene2	
			44..57	Pix Dynamic Scene3	
			58..71	Pix Dynamic Scene4	
			72..85	Pix Dynamic Scene5	
			86..99	Pix Dynamic Scene6	
			100..113	Pix Dynamic Scene7	
			114..127	Pix Dynamic Scene8	
			128..143	Pix Dynamic Scene9	
			142..155	Pix Dynamic Scene10	
			156..169	Pix Dynamic Scene11	
			170..183	Pix Dynamic Scene12	
			184..197	Pix Dynamic Scene13	
			198..211	Pix Dynamic Scene14	
			212..225	Pix Dynamic Scene15	
226..239	Pix Dynamic Scene16				
240..255	Pix Dynamic Scene17				
30	13	60		<b>Head 2 Foreground dimmer</b>	
			0..255	Expand Patterns Foreground dimmer 0 – 100%. (Foreground Color Share with "Red,Green,Blue"Channel)	
31	14	61		<b>Head 2 Background dimmer</b>	
			0..255	Expand Patterns Background dimmer 0 – 100%.	
32	15	62		<b>Head 2 Background Red</b>	
			0..255	0-100%Background Red Dimmer from Dark to Bright	
33	16	63		<b>Head 2 Background Green</b>	
			0..255	0-100% Background Green Dimmer from Dark to Bright	
34	17	64		<b>Head 2 Background Blue</b>	
			0..255	0-100% Background Blue Dimmer from Dark to Bright	
		65	0..255	<b>Head 2 Red in Ring 1</b> Red in Ring 1 Saturation Control (0-100%)	
			66	0..255	<b>Head 2 Green in Ring 1</b> Green in Ring 1 Saturation Control (0-100%)
				67	0..255

68		<b>Head 2 Red in Ring 2</b>
	0..255	Red in Ring 2 Saturation Control (0-100%)
69		<b>Head 2 Green in Ring 2</b>
	0..255	Green in Ring 2 Saturation Control (0-100%)
70		<b>Head 2 Blue in Ring 2</b>
	0..255	Blue in Ring 2 Saturation Control (0-100%)
71		<b>Head 2 Red in Ring 3</b>
	0..255	Red in Ring 3 Saturation Control (0-100%)
72		<b>Head 2 Green in Ring 3</b>
	0..255	Green in Ring 3 Saturation Control (0-100%)
73		<b>Head 2 Blue in Ring 3</b>
	0..255	Blue in Ring 3 Saturation Control (0-100%)
74		<b>Head 2 Red in Ring 4</b>
	0..255	Red in Ring 4 Saturation Control (0-100%)
75		<b>Head 2 Green in Ring 4</b>
	0..255	Green in Ring 4 Saturation Control (0-100%)
76		<b>Head 2 Blue in Ring 4</b>
	0..255	Blue in Ring 4 Saturation Control (0-100%)
77		<b>Head 2 Red in Ring 5</b>
	0..255	Red in Ring 5 Saturation Control (0-100%)
78		<b>Head 2 Green in Ring 5</b>
	0..255	Green in Ring 5 Saturation Control (0-100%)
79		<b>Head 2 Blue in Ring 5</b>
	0..255	Blue in Ring 5 Saturation Control (0-100%)
80		<b>Head 2 Red in Ring 6</b>
	0..255	Red in Ring 6 Saturation Control (0-100%)
81		<b>Head 2 Green in Ring 6</b>
	0..255	Green in Ring 6 Saturation Control (0-100%)
82		<b>Head 2 Blue in Ring 6</b>
	0..255	Blue in Ring 6 Saturation Control (0-100%)
83		<b>Head 2 Red in Ring 7</b>
	0..255	Red in Ring 7 Saturation Control (0-100%)
84		<b>Head 2 Green in Ring 7</b>
	0..255	Green in Ring 7 Saturation Control (0-100%)
85		<b>Head 2 Blue in Ring 7</b>
	0..255	Blue in Ring 7 Saturation Control (0-100%)
86		<b>Head 2 Red in Ring 8</b>
	0..255	Red in Ring 8 Saturation Control (0-100%)
87		<b>Head 2 Green in Ring 8</b>
	0..255	Green in Ring 8 Saturation Control (0-100%)
88		<b>Head 2 Blue in Ring 8</b>
	0..255	Blue in Ring 8 Saturation Control (0-100%)
89		<b>Head 2 Red in Ring 9</b>
	0..255	Red in Ring 9 Saturation Control (0-100%)
90		<b>Head 2 Green in Ring 9</b>
	0..255	Green in Ring 9 Saturation Control (0-100%)
91		<b>Head 2 Blue in Ring 9</b>
	0..255	Blue in Ring 9 Saturation Control (0-100%)



		92		Head 2 Red in Ring 10
			0..255	Red in Ring 10 Saturation Control (0-100%)
		93		Head 2 Green in Ring 10
			0..255	Green in Ring 10 Saturation Control (0-100%)
		94		Head 2 Blue in Ring 10
			0..255	Blue in Ring 10 Saturation Control (0-100%)

Versa Flex Par Tron 7 DMX CHART				
Mode/Channel			Value	Function
Simple 34CH	Same 17CH	Full 44CH		The selection and collocation of different mode.Simple occuppies less channels,Same mode occuppies very few channels,Full is full channel operation
1	1	1		Head 1 Dimmer
			0..255	Dimmer 0%...100%
2	2	2		Head 1 Shutter
			0..31	Shutter Closed
			32..63	Shutter Open
			64..95	Strobe Effect Slow to Fast
			96..127	Shutter Open
			128..159	Pulse-effect in Sequences Slow to Fast
			160..191	Shutter Open
			192..223	Random Strobe Effect Slow to Fast
3	3	3		Head 1 Red
			0..255	0-100% Red Dimmer from Dark to Bright
4	4	4		Head 1 Green
			0..255	0-100% Green Dimmer from Dark to Bright
5	5	5		Head 1 Blue
			0..255	0-100% Blue Dimmer from Dark to Bright
6	6	6		Head 1 White
			0..255	0-100% White Dimmer from Dark to Bright
		7		Head 1 Macro Color
			0..15	No Function
			16..31	Red
			32..47	Green
			48..63	Blue
			64..79	White
			80..95	Red+Green
			96..111	Red+Blue
			112..127	Red+White
			128..143	Green+Blue
			144..159	Green+White
			160..175	Blue+Wtihe
			176..191	R+G+B
192..207	R+G+B+W			
208..212	2700K			

		7	213..217	3200K
			218..222	3500K
			223..227	5000K
			228..232	5500K
			233..237	6000K
			238..242	6500K
			243..247	7000K
			248..255	8000K
		8		<b>Head 1 Color Temp</b>
			0..15	No Function
			16..45	Below 3200K
			46..75	3200K - 3500K
			76..105	3500K - 5000K
			106..135	5000K - 5500K
			136..165	5500K - 6000K
			166..195	6000K - 6500K
		196..225	6500K - 7000K	
		226..255	7000K - 8000K	
		9		<b>Head 1 Macro Run</b>
			0..15	No function
			16..31	Macro Run 1
			32..47	Macro Run 2
			48..63	Macro Run 3
			64..79	Macro Run 4
			80..95	Macro Run 5
			96..111	Macro Run 6
			112..127	Macro Run 7
			128..143	Macro Run 8
			144..159	Macro Sound 1
			160..175	Macro Sound 2
			176..191	Macro Sound 3
			192..207	Macro Sound 4
		208..223	Macro Sound 5	
		224..239	Macro Sound 6	
		240..255	Macro Sound 7	
8	8	10		<b>Head 1 Macro Speed</b>
			0..255	Macro Speed from Slow To Fast
9	9	11		<b>Head 1 Pix_Dimmer</b>
			0..255	Pix_Dimmer 0%...100%
10	10	12		<b>Head 1 Pix_Strobe</b>
			0..255	Pix_Strobe Speed 0%...100%
		13		<b>Head 1 Pix_Red</b>
			0..255	0-100% Pix_Red Dimmer from Dark to Bright
		14		<b>Head 1 Pix_Green</b>
			0..255	0-100% Pix_Green Dimmer from Dark to Bright
		15		<b>Head 1 Pix_Blue</b>
			0..255	0-100% Pix_Blue Dimmer from Dark to Bright

11	11	16		<b>Head 1 Pix_color</b>
			0..0	No Function
			1..15	Red
			16..31	Green
			32..47	Blue
			48..63	Red+Blue
			64..79	Red+Green
			80..95	Green+Blue
			96..111	Red+Blue+Green
			112..127	2700K
			128..143	3200K
			144..159	3500K
			160..175	5000K
			176..191	5500K
			192..207	6000K
			208..223	6500K
224..239	7000K			
240..255	8000K			
12	12	17		<b>Head 1 Pix_Macro</b>
			0..15	No Function
			16..29	Pix Dynamic Scene1
			30..43	Pix Dynamic Scene2
			44..57	Pix Dynamic Scene3
			58..71	Pix Dynamic Scene4
			72..85	Pix Dynamic Scene5
			86..99	Pix Dynamic Scene6
			100..113	Pix Dynamic Scene7
			114..127	Pix Dynamic Scene8
			128..143	Pix Dynamic Scene9
			142..155	Pix Dynamic Scene10
			156..169	Pix Dynamic Scene11
			170..183	Pix Dynamic Scene12
			184..197	Pix Dynamic Scene13
			198..211	Pix Dynamic Scene14
212..225	Pix Dynamic Scene15			
226..239	Pix Dynamic Scene16			
240..255	Pix Dynamic Scene17			
13	13	18		<b>Head 1 Pix_Macro_Speed</b>
			0..255	Slow to Fast
14	14	19		<b>Head 1 Expand Patterns</b>
			0..15	No Function
			16..29	Pix Dynamic Scene1
			30..43	Pix Dynamic Scene2
			44..57	Pix Dynamic Scene3
			58..71	Pix Dynamic Scene4

14	14	19	72..85	Pix Dynamic Scene5
			86..99	Pix Dynamic Scene6
			100..113	Pix Dynamic Scene7
			114..127	Pix Dynamic Scene8
			128..143	Pix Dynamic Scene9
			142..155	Pix Dynamic Scene10
			156..169	Pix Dynamic Scene11
			170..183	Pix Dynamic Scene12
			184..197	Pix Dynamic Scene13
			198..211	Pix Dynamic Scene14
			212..225	Pix Dynamic Scene15
			226..239	Pix Dynamic Scene16
240..255	Pix Dynamic Scene17			
15	15	20		<b>Head 1 Pix_Foreground dimmer</b>
			0..255	Pix_Expand Patterns Foreground dimmer 0 – 100%. (Foreground Color Share with "Pix_Macro"Channel)
16	16	21		<b>Head 1 Pix_Background dimmer</b>
			0..255	Pix_Expand Patterns Background dimmer 0 – 100%.
17	17	22		<b>Head 1 Pix_Background_color</b>
			0..0	No Function
			1..15	Red
			16..31	Green
			32..47	Blue
			48..63	Red+Blue
			64..79	Red+Green
			80..95	Green+Blue
			96..111	Red+Blue+Green
			112..127	2700K
			128..143	3200K
			144..159	3500K
			160..175	5000K
			176..191	5500K
			192..207	6000K
208..223	6500K			
224..239	7000K			
240..255	8000K			
18	1	23		<b>Head 2 Dimmer</b>
			0..255	Dimmer 0%...100%
19	2	24		<b>Head 2 Shutter</b>
			0..31	Shutter Closed
			32..63	Shutter Open
			64..95	Strobe Effect Slow to Fast
			96..127	Shutter Open
			128..159	Pulse-effect in Sequences Slow to Fast
			160..191	Shutter Open
			192..223	Random Strobe Effect Slow to Fast
224..255	Shutter Open			

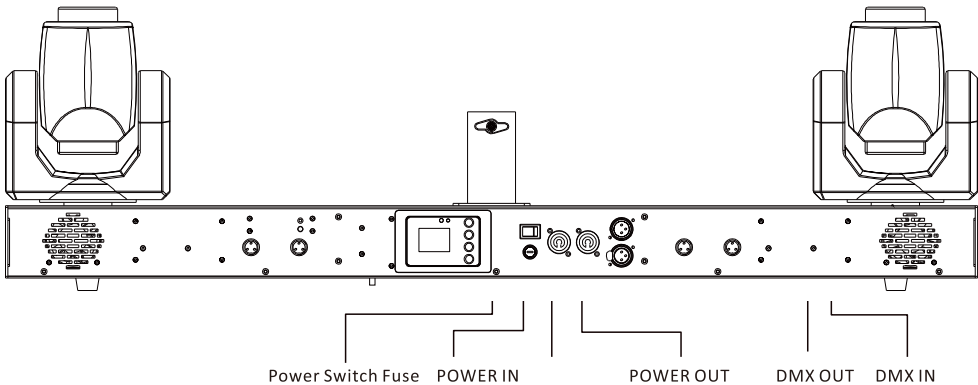
15	15	20		<b>Head 1 Pix_Foreground dimmer</b>
			0..255	Pix_Expand Patterns Foreground dimmer 0 – 100%. (Foreground Color Share with "Pix_Macro"Channel)
16	16	21		<b>Head 1 Pix_Background dimmer</b>
			0..255	Pix_Expand Patterns Background dimmer 0 – 100%.
17	17	22		<b>Head 1 Pix_Background_color</b>
			0..0	No Function
			1..15	Red
			16..31	Green
			32..47	Blue
			48..63	Red+Blue
			64..79	Red+Green
			80..95	Green+Blue
			96..111	Red+Blue+Green
			112..127	2700K
			128..143	3200K
			144..159	3500K
			160..175	5000K
			176..191	5500K
			192..207	6000K
208..223	6500K			
224..239	7000K			
240..255	8000K			
18	1	23		<b>Head 2 Dimmer</b>
			0..255	Dimmer 0%...100%
19	2	24		<b>Head 2 Shutter</b>
			0..31	Shutter Closed
			32..63	Shutter Open
			64..95	Strobe Effect Slow to Fast
			96..127	Shutter Open
			128..159	Pulse-effect in Sequences Slow to Fast
			160..191	Shutter Open
			192..223	Random Strobe Effect Slow to Fast
224..255	Shutter Open			
20	3	25		<b>Head 2 Red</b>
			0..255	0-100% Red Dimmer from Dark to Bright
21	4	26		<b>Head 2 Green</b>
			0..255	0-100% Green Dimmer from Dark to Bright
22	5	27		<b>Head 2 Blue</b>
			0..255	0-100% Blue Dimmer from Dark to Bright
23	6	28		<b>Head 2 White</b>
			0..255	0-100% White Dimmer from Dark to Bright
		29		<b>Head 2 Macro Color</b>
			0..15	No Function
			16..31	Red
			32..47	Green

		29	48..63	Blue
			64..79	White
			80..95	Red+Green
			96..111	Red+Blue
			112..127	Red+White
			128..143	Green+Blue
			144..159	Green+White
			160..175	Blue+Wtihe
			176..191	R+G+B
			192..207	R+G+B+W
			208..212	2700K
			213..217	3200K
			218..222	3500K
			223..227	5000K
			228..232	5500K
			233..237	6000K
			238..242	6500K
			243..247	7000K
248..255	8000K			
		30		Head 2 Color Temp
			0..15	No Function
			16..45	Below 3200K
			46..75	3200K - 3500K
			76..105	3500K - 5000K
			106..135	5000K - 5500K
			136..165	5500K - 6000K
			166..195	6000K - 6500K
			196..225	6500K - 7000K
226..255	7000K - 8000K			
24	7	31		Head 2 Macro Run
			0..15	No function
			16..31	Macro Run 1
			32..47	Macro Run 2
			48..63	Macro Run 3
			64..79	Macro Run 4
			80..95	Macro Run 5
			96..111	Macro Run 6
			112..127	Macro Run 7
			128..143	Macro Run 8
			144..159	Macro Sound 1
			160..175	Macro Sound 2
			176..191	Macro Sound 3
			192..207	Macro Sound 4
			208..223	Macro Sound 5
224..239	Macro Sound 6			
240..255	Macro Sound 7			

25	8	32		<b>Head 2 Macro Speed</b>
			0..255	Macro Speed from Slow To Fast
26	9	33		<b>Head 2 Pix_Dimmer</b>
			0..255	Pix_Dimmer 0%...100%
27	10	34		<b>Head 2 Pix_Strobe</b>
			0..255	Pix_Strobe Speed 0%...100%
		35		<b>Head 2 Pix_Red</b>
			0..255	0-100% Pix_Red Dimmer from Dark to Bright
		36		<b>Head 2 Pix_Green</b>
			0..255	0-100% Pix_Green Dimmer from Dark to Bright
		37		<b>Head 2 Pix_Blue</b>
			0..255	0-100% Pix_Blue Dimmer from Dark to Bright
28	11	38		<b>Head 2 Pix_color</b>
			0..0	No Function
			1..15	Red
			16..31	Green
			32..47	Blue
			48..63	Red+Blue
			64..79	Red+Green
			80..95	Green+Blue
			96..111	Red+Blue+Green
			112..127	2700K
			128..143	3200K
			144..159	3500K
			160..175	5000K
			176..191	5500K
192..207	6000K			
208..223	6500K			
224..239	7000K			
240..255	8000K			
29	12	39		<b>Head 2 Pix_Macro</b>
			0..15	No Function
			16..29	Pix Dynamic Scene1
			30..43	Pix Dynamic Scene2
			44..57	Pix Dynamic Scene3
			58..71	Pix Dynamic Scene4
			72..85	Pix Dynamic Scene5
			86..99	Pix Dynamic Scene6
			100..113	Pix Dynamic Scene7
			114..127	Pix Dynamic Scene8
			128..143	Pix Dynamic Scene9
			142..155	Pix Dynamic Scene10
			156..169	Pix Dynamic Scene11
			170..183	Pix Dynamic Scene12
184..197	Pix Dynamic Scene13			
198..211	Pix Dynamic Scene14			

29	12	39	212..225	Pix Dynamic Scene15
			226..239	Pix Dynamic Scene16
			240..255	Pix Dynamic Scene17
30	13	40		<b>Head 2 Pix_Macro_Speed</b>
			0..255	Slow to Fast
31	14	41		<b>Head 2 Expand Patterns</b>
			0..15	No Function
			16..29	Pix Dynamic Scene1
			30..43	Pix Dynamic Scene2
			44..57	Pix Dynamic Scene3
			58..71	Pix Dynamic Scene4
			72..85	Pix Dynamic Scene5
			86..99	Pix Dynamic Scene6
			100..113	Pix Dynamic Scene7
			114..127	Pix Dynamic Scene8
			128..143	Pix Dynamic Scene9
			142..155	Pix Dynamic Scene10
			156..169	Pix Dynamic Scene11
			170..183	Pix Dynamic Scene12
			184..197	Pix Dynamic Scene13
			198..211	Pix Dynamic Scene14
			212..225	Pix Dynamic Scene15
226..239	Pix Dynamic Scene16			
240..255	Pix Dynamic Scene17			
32	15	42		<b>Head 2 Pix_Foreground dimmer</b>
			0..255	Pix_Expand Patterns Foreground dimmer 0 – 100%. (Foreground Color Share with "Pix_Macro"Channel)
33	16	43		<b>Head 2 Pix_Background dimmer</b>
			0..255	Pix_Expand Patterns Background dimmer 0 – 100%.
34	17	44		<b>Head 2 Pix_Background_color</b>
			0..0	No Function
			1..15	Red
			16..31	Green
			32..47	Blue
			48..63	Red+Blue
			64..79	Red+Green
			80..95	Green+Blue
			96..111	Red+Blue+Green
			112..127	2700K
			128..143	3200K
			144..159	3500K
			160..175	5000K
			176..191	5500K
			192..207	6000K
208..223	6500K			
224..239	7000K			
240..255	8000K			





## 10. Maintenance and cleaning

It is absolutely essential that the fixture is kept clean and that dust, dirt and smoke-fluid residues must not build up on or within the fixture. Otherwise, the fixture's light-output will be significantly reduced. Regular cleaning will not only ensure the maximum light-output, but will also allow the fixture to function throughout its life. A soft lint-free cloth moistened with any good glass cleaning fluid is recommended, under no circumstances should alcohol or solvents be used!

### DANGER!

Disconnect from power before starting any maintenance work!





The front objective lens will require weekly cleaning as smoke-fluid tends to building up residues, reducing the light-output very quickly. The cooling-fans should be cleaned monthly.

The interior of the fixture should be cleaned at least annually using a vacuum-cleaner or compressed air. Remove dust and dirt from the fans and cooling vents using a soft brush and vacuum-cleaner.

Replacing the fuse. Before replacing the fuse, unplug from power.

- 1) Remove the fuse holder on the rear panel of the base with a fitting screwdriver from the housing (anti-clockwise).
- 2) Remove the old fuse from the fuse holder.
- 3) Install the new fuse in the fuse holder (only the same type and rating).
- 4) Replace the fuse holder in the housing and fix it.

## RF REMOTE FUNCTIONS

- 1: ID1-ID8, according to the ID value set on the device, after pressing the ID X corresponding to the RF remote control, the corresponding device is controlled. At the performance site, devices can be assigned up to 8 ID values.
- 2: CLR. Clear the current effect of RF remote function setting
- 3: RS. restores the last effect cleared by CLR.
- 4: STOP button clear all effects.
- 5: Play button restore all effects.
- 6: "Dimmer" brightness adjustment.
- 7: "Strobe" turn on strobe effect.
- 8: In "Sound" state, adjust the microphone sensitivity.  
- In "Auto" state, adjust the speed of the auto run.
- In "Dimmer" state, adjust the speed of dimmer.
- In "Strobe" state, adjust the speed of strobe.
- In "Green" state, adjust the speed of green.
- In "Red" state, adjust the speed of red.
- In "Warm" state, adjust the speed of warm.
- In "RGB" state, adjust the speed of RGB.
- In "Cool" state, adjust the speed of cool.
- In "Unit" state, adjust the speed of unit 1.
- In "Unit 2" state, adjust the speed of unit 2.
- In "Head" state, adjust the speed of Head.
- 9: " + " - " Button
- In "Dimmer" state, brightness adjustment.
- In "Strobe" state, strobe adjustment.
- In "Green" state, green adjustment.
- In "Red" state, red adjustment.
- In "Warm" state, warm adjustment. In "RGB" state, RGB adjustment.
- In "Cool" state, Cool adjustment.
- In "Unit1" state, Unit1 adjustment.
- In "Unit2" state, Unit2 adjustment.
- In "Head" state, head adjustment.
- In "Auto" state, autorun adjustment.
- In "Sound" state, sound control adjustment.
- 10: MED set all the speed of all functions to medium.
- 11: "1-12" correspond to each function respectively "1-12". Such as if you select Warm function, press "1" activate Marco 1, press "2" to activate Marco 2 etc...
- 12, "Head"/"Unit1"/"Unit2"/"Warm"/"RGB"/"Cool" is the function button which controls the corresponding function, if you press "Cool" button, the " + " - " button or "1-12" button are for "Cool" function, until you press another function button, then enter the service for another button.
- 13: "Red", "Green" and "Blue" are optional colors, and users can match and set according to their desired colors.
- 14: ("DMX" "WDMX" on the RF remote), ("Menu" on the base) or ("ID button on different device") makes the fixture exit the current setting and enter the cable DMX signal or Wireless DMX signal (Wireless DMX requires the device hardware to be added wireless DMX fob to achieve this).
- 15: "Auto" "Sound" turn on auto run state or sound control state, it can be used with the "1-12" button,  







## JMAZ LIGHTING

Address: 2422 Lee Ave, South El Monte, CA 91733

Phone: 1-626-380-0883    [www.jmazlighting.com](http://www.jmazlighting.com)    [support@jmazlighting.com](mailto:support@jmazlighting.com)